

**SPECIAL MUNICIPAL OFF-SALE RETAIL LIQUOR BOARD
AT CITY HALL COUNCIL CHAMBERS
MAY 7, 2014
6:30 P.M.**

AGENDA

- I. CALL TO ORDER
- II. CONSENT AGENDA
- III. NEW BUSINESS
 - A. May Promotions
 - B. Move August Meeting Date – Please bring your calendar
- IV. OLD BUSINESS
 - A. Liquor Store Location – Proposal (page 1)
 - B. Sales & Purchasing Report
 - C. Wine Club
 - D. Open House – May 23, 2014
 - E. 2014 Liquor Store Goals
 - F. 2014 Town & Country Days Parade
 - G. Sign/Billboard
 - H. Beer Camp – June 6, 2014
- V. INFORMATIONAL
 - A. MEETING SCHEDULE:
 - Special Joint Liquor Board Meeting & Budget & Finance Meeting – Thursday, May 8, 2014 at 6:30 p.m. at City Hall - Proposed New Liquor Store Location

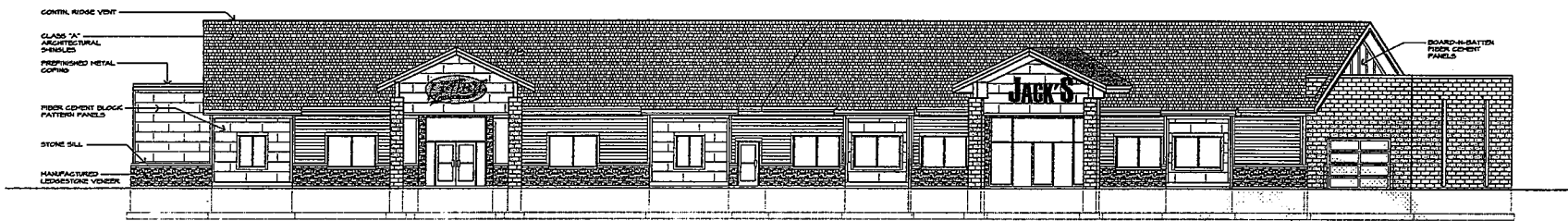
 - City Council Meeting – Wednesday, May 28, 2014 at 6:00 p.m. at City Hall - with guests on the agenda at 6:45 p.m. – Proposed New Liquor Store Location
- VI. ADJOURN

*****Please contact Bill Ludwig at 320-243-3874 or at liquor@paynesvillemn.com if you can't attend the meeting.*****

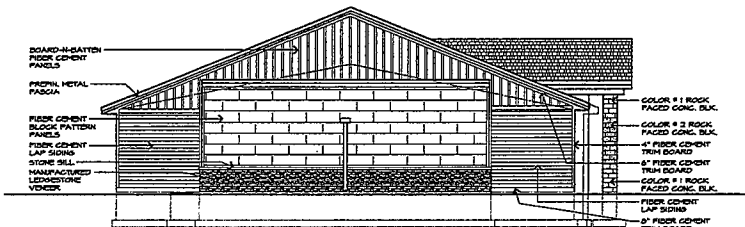
**Voting Members: Jeff Thompson, Jennifer Welling, Steve Vaske, Sue Hecht, and Reed Ringstad.
Advisory Member: Bill Ludwig**

This agenda has been prepared to provide information regarding an upcoming meeting of the Paynesville Municipal Off-Sale Retail Liquor Board. This document does not claim to be complete and is subject to change.

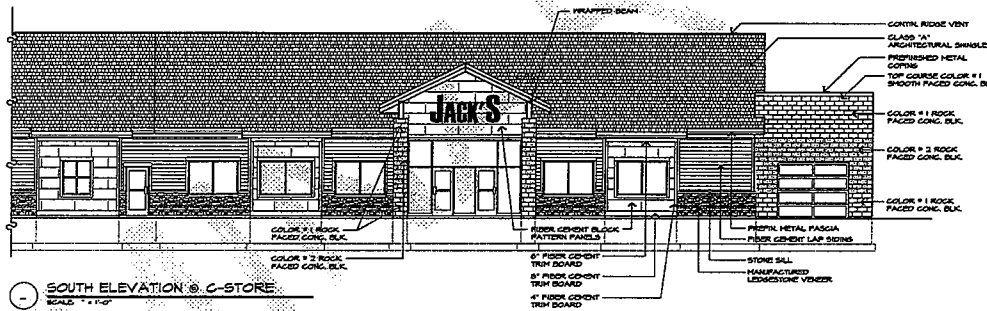
BARRIER FREE: All Paynesville Cable Committee meetings are accessible to the handicapped. Attempts will be made to accommodate any other individual need for special services. Please contact City Hall (320) 243-3714 early, so necessary arrangements can be made.



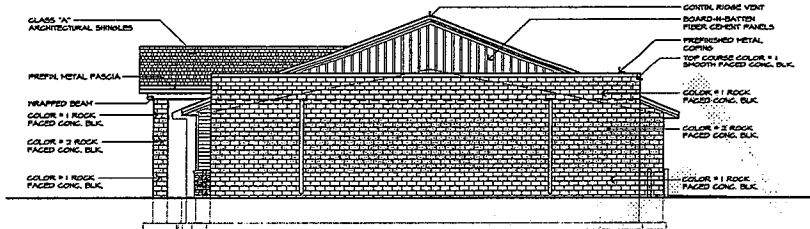
○ SOUTH ELEVATION
SCALE: 1/4" = 1'-0"



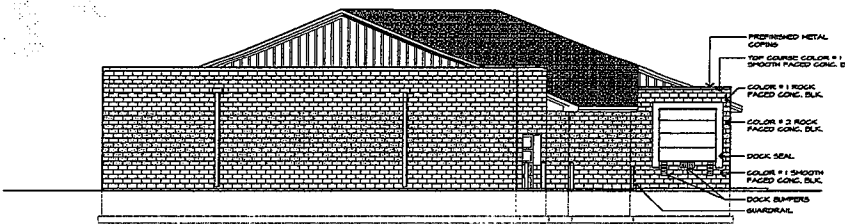
○ WEST ELEVATION
SCALE: 1/4" = 1'-0"



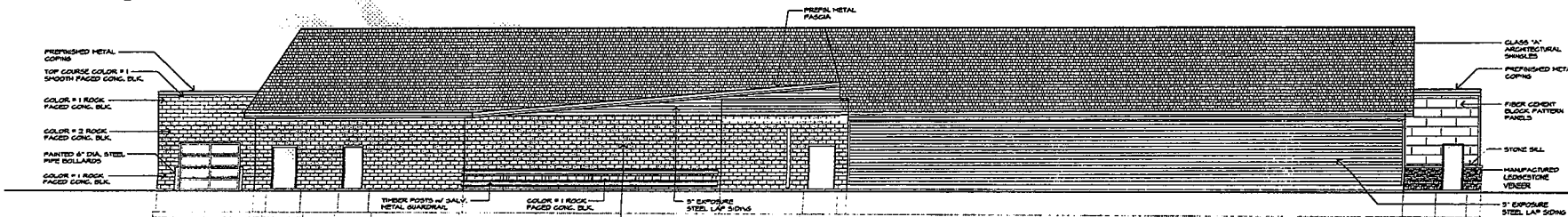
○ SOUTH ELEVATION @ C-STORE
SCALE: 1/4" = 1'-0"



○ EAST ELEVATION
SCALE: 1/4" = 1'-0"



○ EAST ELEVATION @ LOADING DOCK
SCALE: 1/4" = 1'-0"



○ NORTH ELEVATION
SCALE: 1/4" = 1'-0"

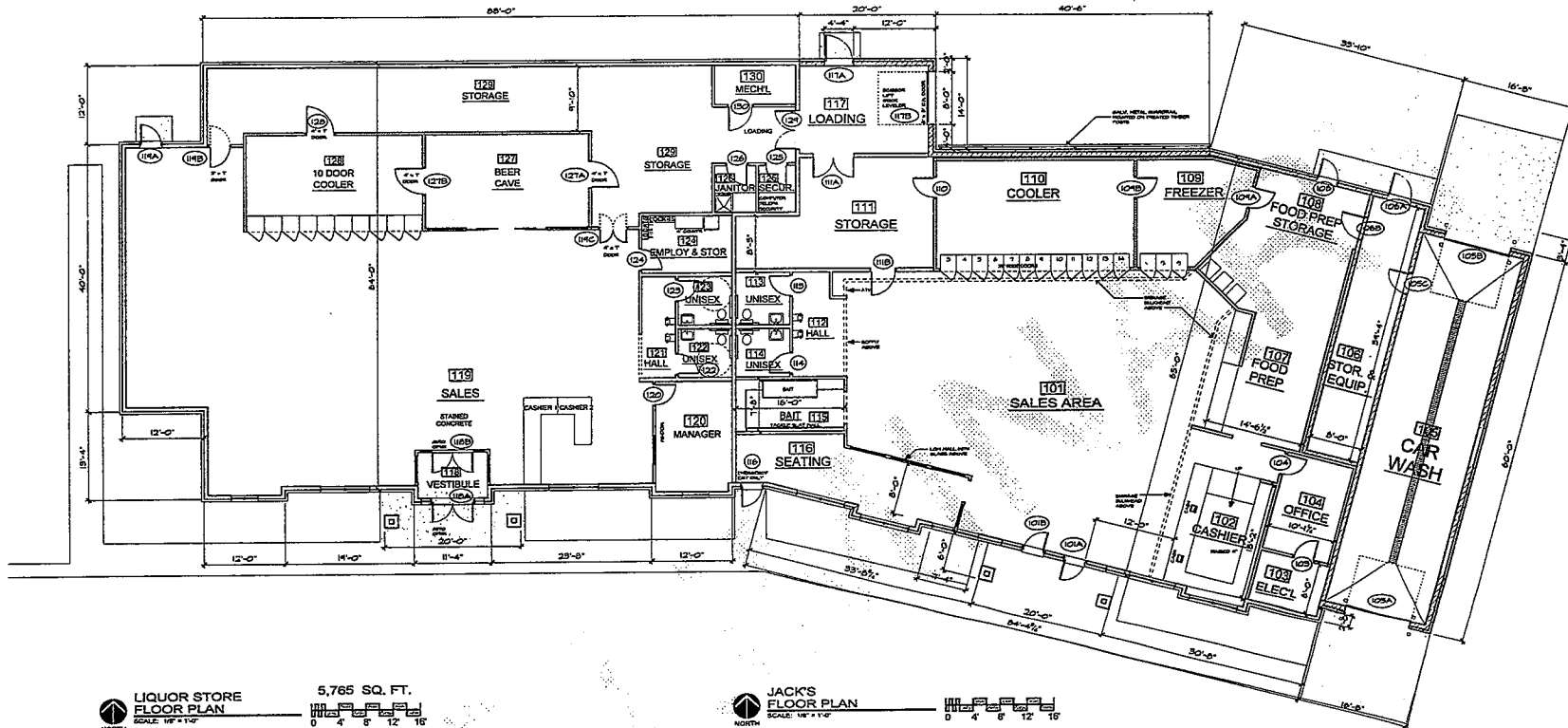
KEENAN
ARCHITECTURAL GROUP
1111 S. 7TH ST. SUITE 200 - LAKEVIEW BUSINESS CTR., ST. LOUIS, MO 63101
TEL: 314-251-5500 FAX: 314-251-5521

PROGRESS
DRAWING
NOT FOR
CONSTRUCTION
3/23/2014

CONV. AND ACFT
DATE: 00-00-00
BY: [blank]
CHECKED: [blank]

NEW BUILDING FACILITY for
JACK'S
OPPORTUNITY PARK DRIVE
PAYNESVILLE, MINNESOTA

SHEET
A5
OF 1 SHEETS



LIQUOR STORE FLOOR PLAN
SCALE: 1/8" = 1'-0"

5,765 SQ. FT.
0 4 8 12 16

JACK'S FLOOR PLAN
SCALE: 1/8" = 1'-0"

0 4 8 12 16

KEENAN ARCHITECTURAL GROUP
1000 W. WASHINGTON AVENUE, SUITE 100
P.O. BOX 255-5571
P.A. 320-255-5571
FAX 320-248-6974

PROGRESS DRAWING
NOT FOR CONSTRUCTION
3/25/2014

DATE: 03-25-2014
DRAWN: [Signature]
CHECKED: [Signature]

NEW BUILDING FACILITY for
JACK'S
OPPORTUNITY PARK DRIVE
PAYNESVILLE, MINNESOTA

SHEET
A3
OF 3 SHEETS

2

DOOR REMARKS

NOTE: EXIT DOORS TO SWING IN THE DIRECTION OF TRAVEL.

DOOR NOTES

1. EXIT DOORS TO SWING IN THE DIRECTION OF TRAVEL.
2. ALL BUILDING EXITS TO HAVE AN ILLUMINATED EXIT SIGN WITH ADA APPROVED STROBE LIGHT. POWER TO BE SUPPLIED BY TWO SEPARATE CIRCUITS, ONE OF WHICH SHALL BE CONTROLLED SEPARATELY FROM ALL OTHER CIRCUITS. SIGNS TO HAVE A BATTERY BACKUP.
3. SIDELIGHTS ADJACENT TO DOORS TO BE TEMPERED SAFETY GLAZING PER CODE.
4. GLAZING IN DOORS TO BE TEMPERED SAFETY GLAZING PER CODE.
5. FORCE OF EXIT DOORS SHALL NOT EXCEED THAT ALLOWED BY CODE.
6. COORDINATE THE FRAME SIZE WITH THE MALL THICKNESS.
7. APPLY SEALANT AROUND THE ENTIRE FRAME PERIMETER OF ALL EXTERIOR AND INTERIOR FRAMES. SEALANT APPLICATION AT INTERIOR FRAMES SHALL CLOSE THE GAP BETWEEN THE MALL SURFACE AND THE FRAME AND SHALL NOT CREATE A COVE.
8. DOOR HANDLE HARDWARE IS TO BE "LEVER" TYPE, TO MEET "ADA" & STATE REQUIREMENTS.
9. EXTERIOR DOOR BUTTS TO HAVE NON-REMOVABLE PINS.
10. PROVIDE "MASTER KEY" SYSTEM FOR THE FACILITY. COORDINATE WITH THE OWNER/TENANT.
11. PROVIDE PADLOCK AT ROOF HATCH.
12. PROVIDE APPROPRIATE ADA HANDICAPPED SIGNAGE AT ALL ROOMS PER DETAILS.
13. PROVIDE MINIMUM (3) SILENCERS PER DOOR.

FINISH REMARKS

- R-1 UNIFORM RENDU OR EQUAL WALL & CEILING PVC PANELS
- R-2 PROVIDE WASHABLE SURFACE CEILING TILES
- R-3 PROVIDE 48" HIGH PLYWOOD MAINSCOT OVER GYPSUM BOARD
- R-4 PROVIDE 48" HIGH PORC. OR G.T. MAINSCOT & PAINTED GYP. BD. ABOVE DRINKING FOUNTAINS
- R-5 RESTROOMS TO RECEIVE 48" HIGH PORC. OR G.T. MAINSCOT & PAINTED GYP. BD. ABOVE
- R-6 52" HIGH WOOD PANEL MAINSCOT AT SEATING AREA MALLS
- R-7 PROVIDE 48" HIGH PLYWOOD MAINSCOT OVER GYPSUM BOARD, VERIFY LOCATION W/ TENANT
- R-8 PROVIDE SUSPENDED CEILING GRID ONLY (NO TILES) W/ PAINTED GYP. BD. ABOVE

ABBREVIATIONS

CONC.	CONCRETE SEALED	LINER	PREFINISHED METAL LINER PANEL
CPT	CARPET	P	PAINT
G.T.	CERAMIC TILE	PFIN	PREFINISHED
C.BLK	CONCRETE BLOCK	PFT	PORCELAIN FLOOR TILE
CSF	CONCRETE SPECIAL PAINT	PLY	PLYWOOD
EXIST	EXISTING	PVC	PVC PANELS
EXPOSED	EXPOSED STRUCTURE	GT	QUARRY TILE
FRP	FIBERGLASS REINFORCED PLASTIC	SAT	SUSPENDED ACoustICAL TILE
GBP	GYPSUM BOARD PAINTED	SV	SHEET VINYL
GBPT	GYPSUM BOARD SPRAYED TEXTURED	S & V	STAIN & VARNISH
GBT	GYPSUM BOARD TEXTURED	TAPE	FIRE TAPE GYPSUM BOARD
GYP.	GYPSUM BOARD	V	VINYL BASE
INSUL.	INSUL.	VCT	VINYL COMPOSITION TILE
		MC	MALL COVERING
		MD	WOOD

ROOM FINISH SCHEDULE

ROOM NUMBER

ROOM NO.	ROOM NAME	FLOOR MATERIAL	BASE MATL	WALLS MATL	FINISH				CEILING MATL	FINISH	CLS. HT.	REMARKS
					N	E	S	W				
G-STORE ROOMS												
101	G-STORE SALES	18 x 18 PFT	PFT	GBP	P	P	P	P	SAT	-	11'-0"	
102	CASHIER	18 x 18 PFT	PFT	GBP	P	P	P	P	SAT	-	10'-6"	
103	ELECTRICAL	CONC.	VINYL	GBP	P	P	P	P	TAPE	-	VARIES	
104	OFFICE	CARPET	VINYL	GBP	P	P	P	P	SAT	-	8'-0"	
105	GAR WASH	CONC.	-	CMU/PVC	PVC	PVC	PVC	PVC	PRECAST	PVC	VARIES	R-1
STORAGE & EQUIPMENT												
106	STORAGE	CONC.	-	CMU	P	P	P	P	GBP	P	8'-0"	
107	FOOD PREP	G.T.	G.T.	FRP	FRP	FRP	FRP	FRP	SAT	-	11'-0"	R-2
108	PREP STORAGE	G.T.	G.T.	FRP	FRP	FRP	FRP	FRP	SAT	-	11'-0"	R-2
109	FREEZER	G.T.	G.T.		FREEZER WALL AND CEILING PANELS							
110	COOLER	G.T.	G.T.		COOLER WALL AND CEILING PANELS							
LIQUOR STORE ROOMS												
111	STORAGE	CONC.	VINYL	FLY/GBP	P	COOLER	P	P	EXPOSED	TAPE	VARIES	R-5
112	HALL	PFT	PFT	GT/GBP	P	P	P	CT/P	SAT	-	9'-0"	R-4
113	UNISEX	PFT OR GT	PFT OR GT	GT/GBP	GT/GBP	GT/GBP	GT/GBP	GT/GBP	SAT	-	9'-0"	R-5
114	UNISEX	PFT OR GT	PFT OR GT	GT/GBP	GT/GBP	GT/GBP	GT/GBP	GT/GBP	SAT	-	9'-0"	R-5
115	BAT	PFT OR GT	PFT OR GT	FRP/GBP	FRP	GBP	GBP	GBP	SAT	-	11'-0"	
116	SEATING	PFT OR GT	PFT OR GT	MD/GBP	MD/GBP	MD/GBP	MD/GBP	MD/GBP	SAT	-	11'-0"	R-6
117	LOADING	CONC.	-	CMU/GYP	CMU/P	CMU/P	GBP	GBP	EXPOSED	P	10'-0"	R-5
LIQUOR STORE VESTIBULE												
118	LIQUOR STORE VESTIBULE	STAINED CONC	VINYL	GBP	P	P	P	P	GBP	P	9'-0"	
119	SALES	STAINED CONC	VINYL	GBP	P	P	P	P	GRID/GYP	P	11'-0"	R-5
120	OFFICE	STAINED CONC	VINYL	GBP	P	P	P	P	SAT	-	9'-0"	
LIQUOR STORE VESTIBULE												
121	HALL	STAINED CONC	VINYL	GBP	P	P	P	P	SAT	-	9'-0"	R-4
122	UNISEX	PFT OR GT	PFT OR GT	GT/GBP	GT/GBP	GT/GBP	GT/GBP	GT/GBP	SAT	-	9'-0"	R-5
123	UNISEX	PFT OR GT	PFT OR GT	GT/GBP	GT/GBP	GT/GBP	GT/GBP	GT/GBP	SAT	-	9'-0"	R-5
124	EMPLOYEE & STORAGE	VCT	VINYL	GBP	P	P	P	P	SAT	-	9'-0"	
125	SECURITY	CONC.	VINYL	GBP	P	P	P	P	EXPOSED	TAPE	VARIES	
JANITOR												
126	JANITOR	CONC.	VINYL	GYP.	P	P	FRP/P	FRP/P	EXPOSED	TAPE	VARIES	
BEER CAVE												
127	BEER CAVE	GT	GT									
COOLER												
128	COOLER	GT	GT									
STORAGE												
129	STORAGE	CONC.	-	FLY/GBP	P	P	P	P	EXPOSED	P	VARIES	R-1
MECHANICAL												
130	MECHANICAL	CONC.	-	GBP	P	P	P	P	EXPOSED	TAPE	VARIES	

DOOR AND FRAME TYPES

TO MATCH EXISTING